

Amphibian Monitoring Turkey Creek Preserve 2016-2019



Frogs and toads are among the few amphibians and reptiles to vocalize. Males produce advertisement calls to attract mates in the water bodies in which they lay eggs. This habit provides an easy means to determine the species present in an area and an index to relative population size from year to year.

Beginning in 2016, amphibian calls were sampled at two sites in Turkey Creek Preserve.

West Marsh: shallow, marshy impounded headwaters of Turkey Creek fed by runoff.

East Pond: small impounded farm pond in small watershed, sometimes maintained by well water.

In 2020, the Nelson Dam site will be added to provide information from the deep pond above the dam and marshy-edged pool below.

Also this year, funnel traps will sample for salamander larvae in several suitable sites in TCP.

Monitoring Results

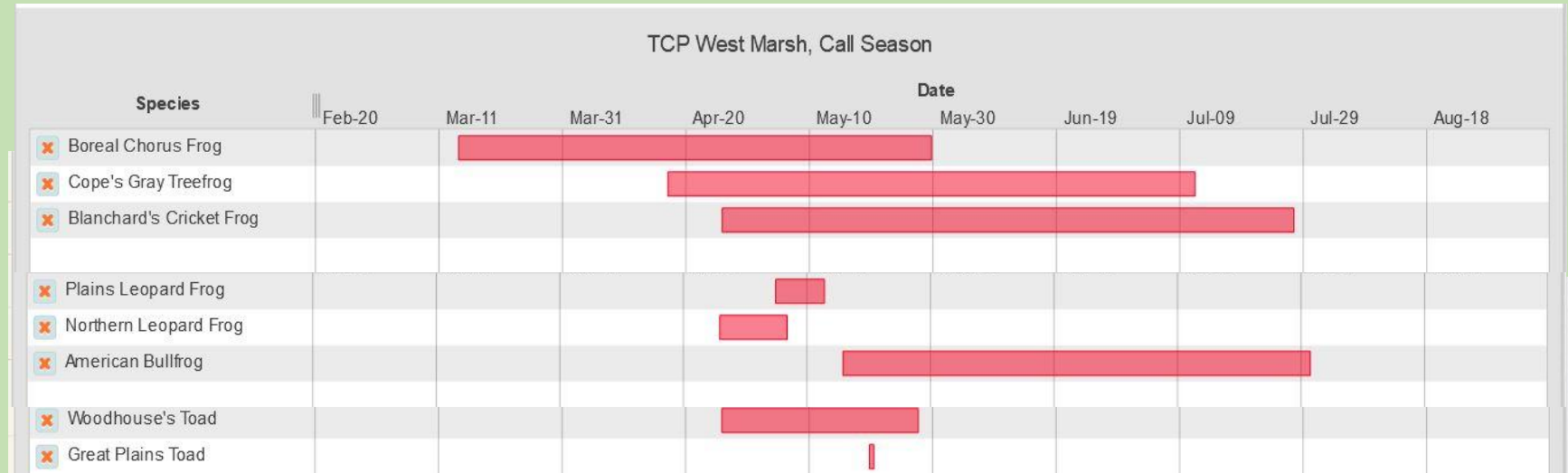
Turkey Creek Preserve

2016-2019

Sampling using the FrogWatch USA protocol begins when the Boreal Chorus Frogs start calling in early spring and continues until the end of July when the American Bullfrogs are winding down. Travel has sometimes delayed start of the sampling season.

All species expected to occur in TCP have been recorded. Differences in wetland type and disturbance history of the surrounding land may explain differences in species between the West Marsh and East Pond.

Sample nights by year:	West Marsh	East Pond
2016 6 April to 27 July	16	16
2017 15 May to 31 July	12	12
2018 14 March to 31 July	14	16
2019 3 May to 27 July	7	7



Monitoring Results

Turkey Creek Preserve

2016-2019

All three small frogs are abundant in both the West Marsh and East Pond during their long calling season.



Boreal Chorus Frog



Cope's Gray Treefrog



Blanchard's Cricket Frog

A few individuals of Plains Leopard Frogs and Northern Leopard Frog were heard in the West Marsh in more than one year.



American Bullfrogs are common in Turkey Creek as well as both sample sites.



Woodhouse's Toad is common in the West Marsh and East Pond during its brief breeding season.



Adult Great Plains Toad are associated with sandy habitats. Only one was heard at TCP.

